

Cielo Retreat Center

DONOR
REQUEST

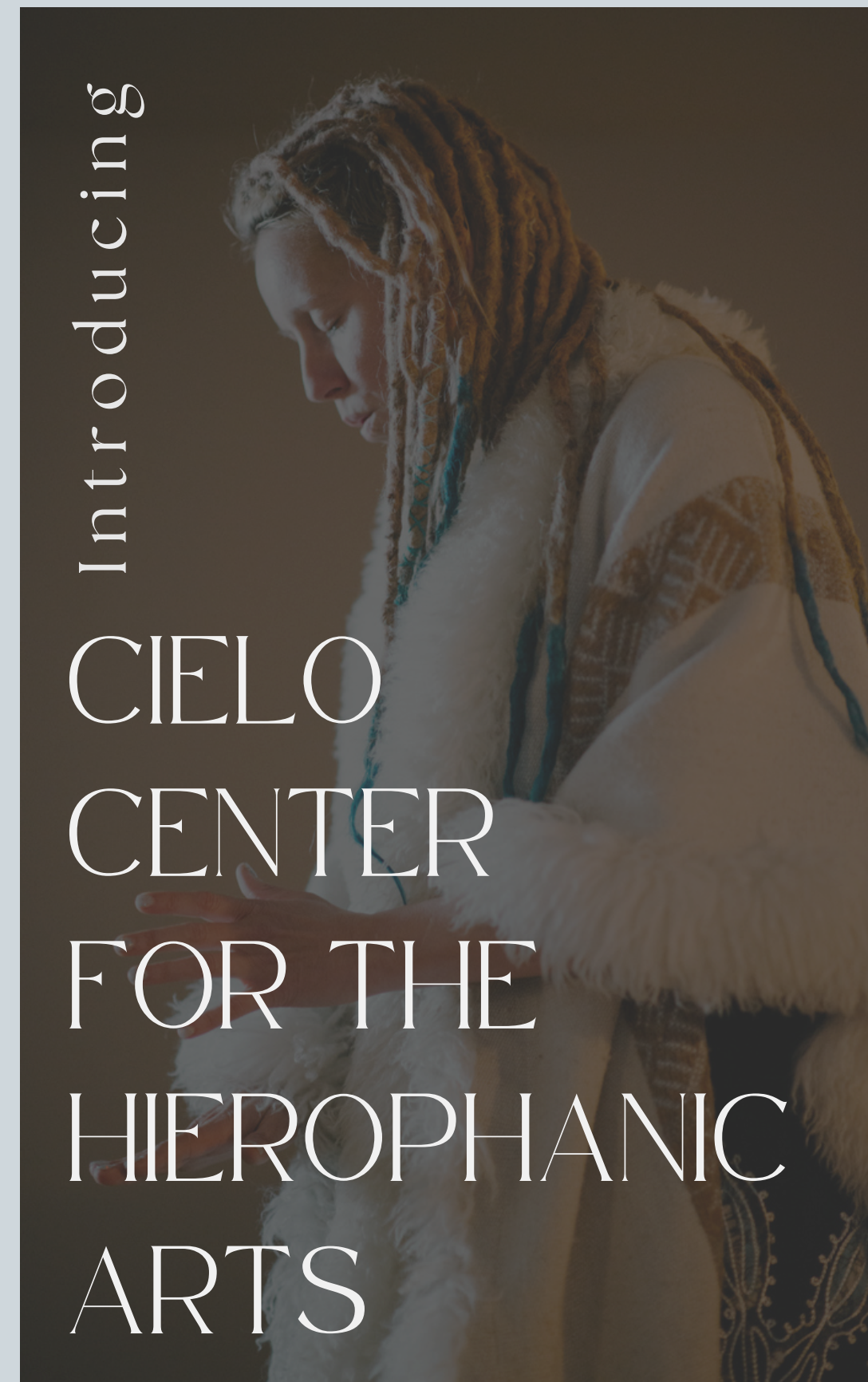
"I have always seen it as my personal mission and duty in this lifetime to activate all the 'imaginal cells' I encounter - meaning to awaken knowledge of the blue print of 'the more beautiful world our hearts know is possible' in the beings that cross my path, such that they can in turn awake this knowledge in others.

The Cielo Center for the Hierophanic Arts (CCHA) is an offering of my heart to the greatest and highest destiny of all beings. CCHA represents a sanctuary for those who wish to explore the mysteries of consciousness, a safe-haven for initiates to explore inner realms, to connect deeply to the Earth, to integrate and to elevate their own hierophanic/initiatory crafts. Call it a retreat center...or call it a Mystery School."

Jess Gold

Introducing

CIELO
CENTER
FOR THE
HIEROPHANIC
ARTS



THE CASTLE IN THE CLOUDS

Your charitable donation to Cielo is an opportunity to participate in the ground-floor psychedelic/esoteric flowering of the United States.

“Ayahuasca”, “Huachuma” and “Sound Healing” were merely strange hippy words just a few years ago, and now they are key terms in the language of world-changers and thought influencers, of conscious entrepreneurs and very much permeating the zeitgeist of progressive culture.



1312 Kers Hill Dr. | Cotopaxi, CO



OUR INTENTION

To be a place where all who truly seek may enter, with knowledge that the container is expertly held with the proper heat and pressure for REAL alchemical transformation to occur at the soul level.

All who serve here will be vetted to ensure they are true Medicine Carriers, whether their medicine is plant, sound, dance, or meditation.

Cielo Center for the Hierophanic Arts will be the foremost container sought by those whose interest is the pinnacle of what is possible in human consciousness.

OUR MISSION

Holding sacred space for the direct experience of the divine to inspire personal and collective spiritual evolution.

OUR VISION

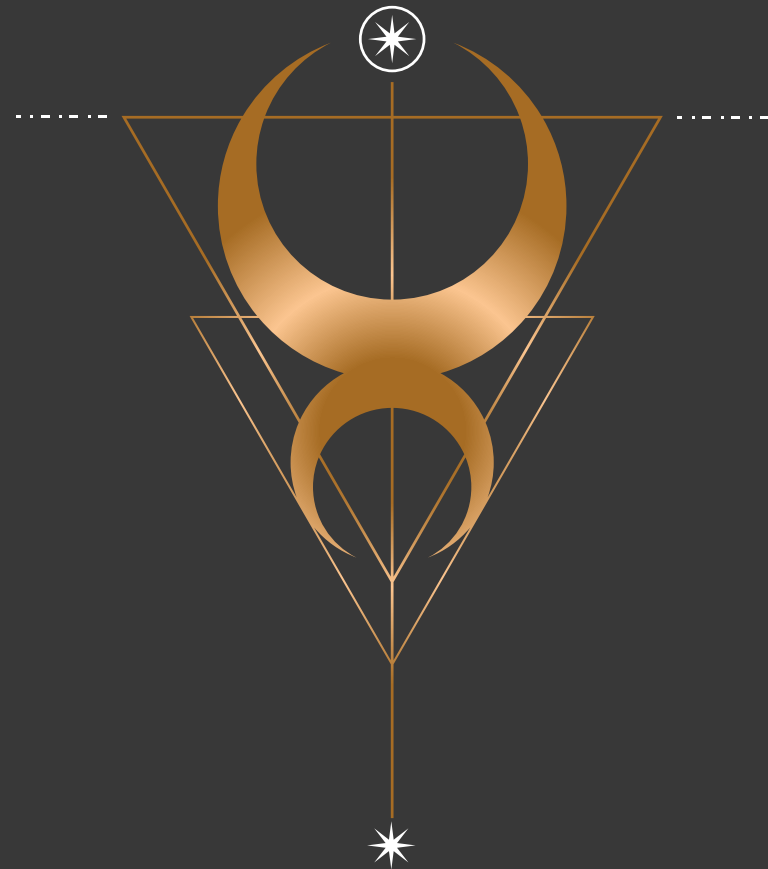
To be a global light on the path
of spiritual evolution and the
ennoblement of humanity.



OUR COMMITMENTS

- Ancestral Wisdom
- Human Ennoblement
- Devoted Service
- Spiritual Alchemy
- Consciousness Expansion

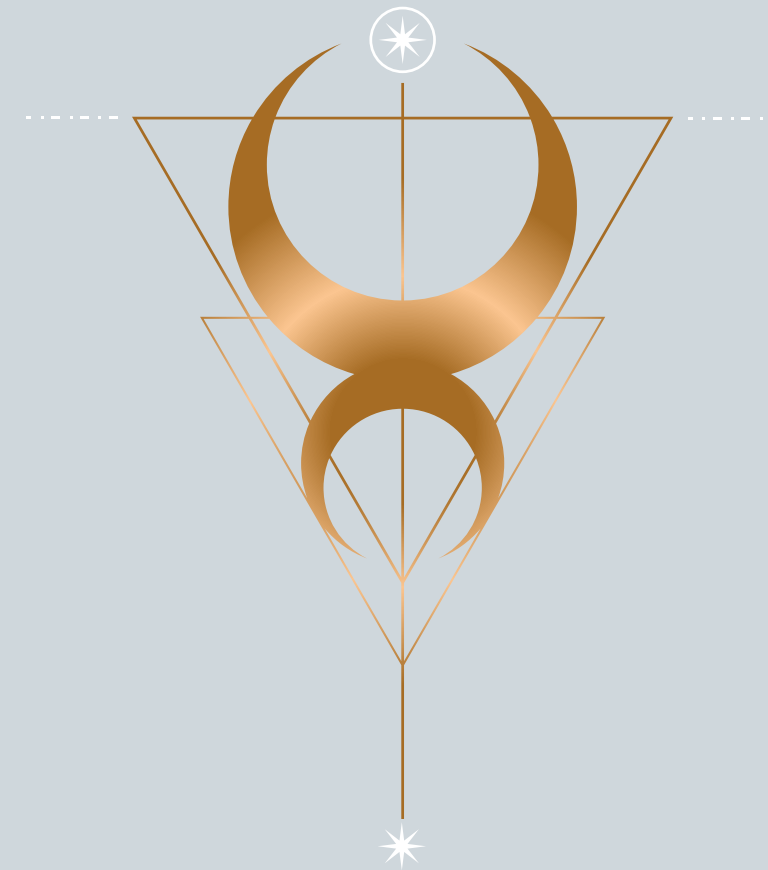
FINANCIALS



FINANCIALS

ONE-TIME COSTS

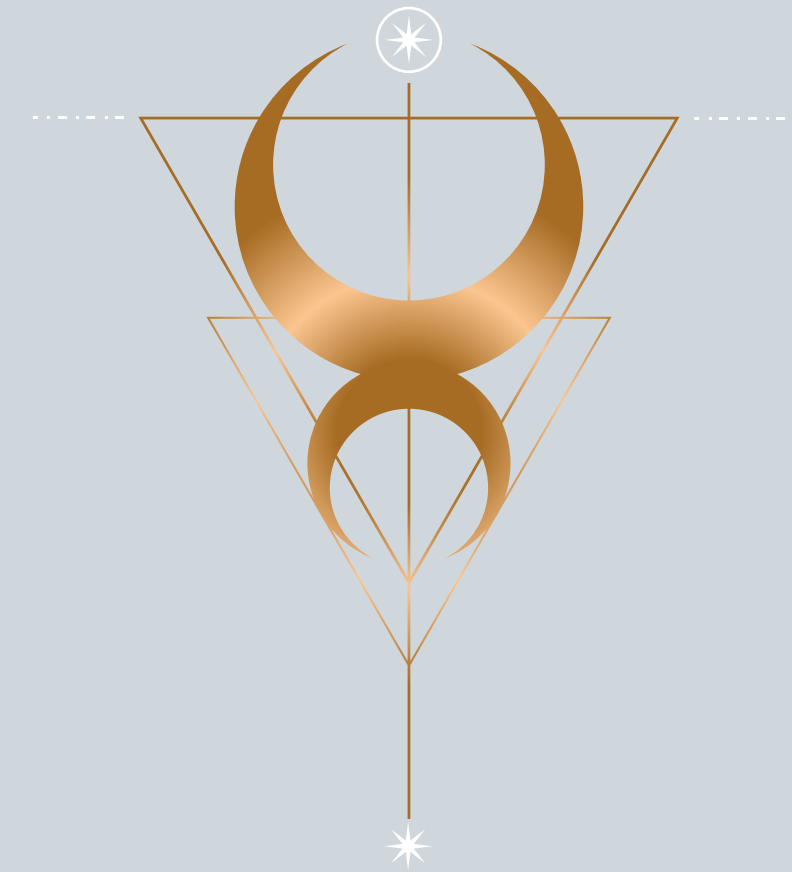
Land and Houses	\$900,000
Formation and Professionals	\$50,000
FF&E	\$100,000
Working Capital (70% 1 yr. FE)	\$238,140
Contingency (10%)	\$128,814
<hr/>	
Total	\$1,416,954



Advertising/Digital	\$80,000
Corporate	\$5,000
Utilities	\$30,000
Insurance	\$25,000
Maintenance (3.5%)	\$31,500
Office	\$12,000
Phone	\$6,000
Salary & Benefits (Jess)	\$100,000
Supplies	\$12,000
Taxes	\$22,500
Misc./Cont.	\$16,200
Total	\$340,200

FINANCIALS

ANNUAL COSTS





MONTHLY & ANNUAL INCOME TOTALS

	Net Revenue* <i>Monthly</i>	Net Revenue* <i>Annually</i>	Annual Overhead	Annual Profit/Loss
Low	\$25,732	\$308,784	\$340,200	-\$31,416
Average	\$39,998	\$479,976	\$340,200	\$139,776
High	\$51,064	\$612,768	\$340,200	\$272,568

** Net Revenue is gross retreat revenue less direct retreat costs.*

Full income & cost projections by category available upon request.



OUR PROCESS

CCHA is forming a Colorado not for profit Corporation to be the owner and operator of the real estate and retreat center.

The retreat center is under contract, with a scheduled closing April 1, 2025.

Seventy percent (70%) of the \$1.5MM capital in donations needs to be received by March 15, 2025.



Fiscal Sponsor

SAPPHIRE

CCHA has contracted with Self Actualized Path to Personal Healing Integration Recovery and Enlightenment, Inc. (Sapphire), a California 501(c)3 to be our fiscal sponsor for donations until we are authorized.

Bene Herer, our Board member, is the founder and leader of Sapphire. See the Sapphire contract and the Sapphire IRS letter.

DONATIONS SHOULD BE TRANSFERRED TO

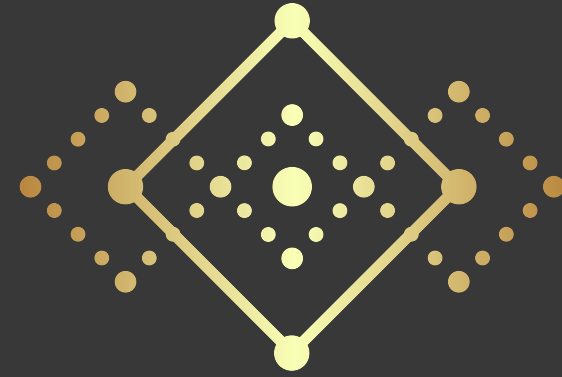
Sapphire, Inc. o/b/o CCHA,

U.S. Bank

Account Number 157540089511

Routing Number 122235821

BOARD



MEMBERS

Jeffrey Canada

Tech Leader/ Conscious Entrepreneur

Jess Gold

Heirophone/Technician of Sacred Space

Chris Beary

Beary Interests/ Social Entrepreneur

Marco Sarmento

Lead Facilitator/Master Spagyricist

Bene Joaquin Herer

President of SAPPHIRE

Johnny Walters

Tech Leader/ Conscious Entrepreneur

Colleen K

Harm Reduction Specialist

Austin Felton

Impact Entrepreneur/Consciousness Evolver

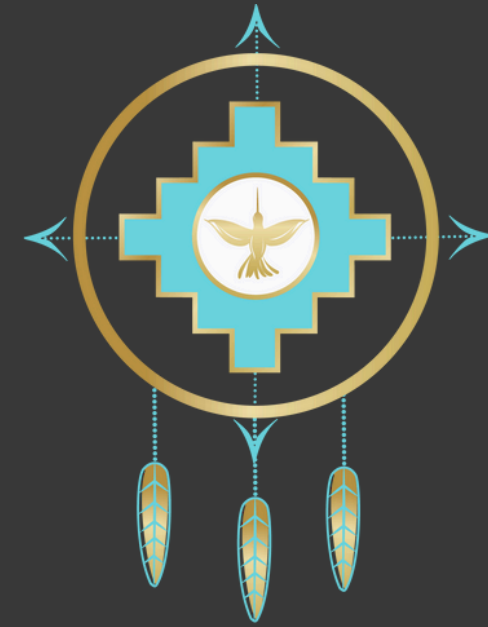


DEAR FRIENDS

You have my deepest gratitude for all the ways you have supported and uplifted this mysterious journey, whether that has been in sharing ceremony with me, having faith in my devotion and capacity, bearing witness to this transformation in deep communion and friendship or being called to consider becoming part of our community.

I have had a deep realization that my purpose and my mission in this life is to help people uncover their divine gifts and elevate them to the highest expression through creating and holding sacred space for their initiatory experiences and self-inquiry. I invite you now to help me share this with the world in a deeper way. Your contribution to this project will help us birth this vision into this physical reality through the creation and sanctification of a retreat center - a sacred space - made just for this purpose. Thank you for being a part of this journey, and thank you for considering a contribution.

*With Great Respect and Great Love,
Jess*



Thank You!